



PCI APPROVED

Empower Your Future with **SIES SCHOOL OF PHARMACEUTICAL SCIENCES**

Unaided Self Financed Professional Educational Institution

Affiliated to the University of Mumbai, Approved by DTE, Government of Maharashtra.
DTE Code: 3710, University Code: 1299, PCI Code: 8546, MSBTE Code: 12315
Linguistic Minority.



www.sieessps.edu.in

PROGRAMS

B. Pharm.

Approved intake: 100 seats
Approved by Pharmacy Council of India, New Delhi
Affiliated to University of Mumbai, Mumbai

D. Pharm.

Approved intake: 60 seats
Approved by Pharmacy Council of India, New Delhi
Maharashtra State Board of Technical Education, Mumbai

PEDAGOGY

The pedagogical approach used at SIES SPS is student centered, applicative case study-based learning with informative lectures, problem solving innovative ideas and concept discussions, in class and out of class group activities.





SIES SPS AT A GLANCE

Commencement of programs (B. Pharm., D. Pharm.)	2024-25
Parent Society	South Indian Education Society SIES Chowk, K.A. Subramaniam Road, Matunga, Mumbai - 400019.
Name & Address of the Institute	SIES School of Pharmaceutical Sciences, D-125, MIDC Main Road, Near USV Ltd., Opp. River Park, TTC Industrial Area, Shiravane, Nerul, Navi Mumbai, Maharashtra 400706
Status	Un-Aided, Linguistic Minority-Tamil
Approved by (B. Pharm; D. Pharm.)	Pharmacy Council of India, New Delhi
Affiliation (B. Pharm)	University of Mumbai, Mumbai
Approved by (D. Pharm)	Maharashtra State Board of Technical Education, Mumbai
Telephone Nos	+91 9833057968
E-mail	siesps@sies.edu.in
Website	http://siessps.edu.in/
Airport	Santacruz Airport (25 km)
Railway Station	Nerul (E)(1.1 km)
Bus Stand	LP Stand (0.5 km)

THE PARENT BODY

ABOUT SIES

The South Indian Education Society (SIES) established in 1932 at Matunga, is a pioneer in the field of education, in Mumbai. The Society has been serving the cause of education and has carved for itself a niche, as a provider of quality and value based education from Nursery to Doctoral level in a wide variety of fields. SIES mission set by founder Shri M. V. Venkateshwaran in 1932

“This society should sincerely serve the cause of education and the educational needs of the common man of this cosmopolitan city”

HONOUR CODE

The honour code of SIES rests on contemporary student’s perception of the value systems and the various practices. SIES firmly believes in secular education and supports cultural and ethnic diversity in the community. The society ensures that its graduates in humanities go out into government and industry with an understanding of the role of science and technology in the scheme of things and its graduates in sciences and technologies go out into the world with an understanding of the power structure of the society and the humanizing influence of the Arts. The honour code dwells on the Panchsheel of our philosophy.

- Honesty and fairness in dealings, equity being central to any action
- No discrimination based on caste, creed, community or wealth.
- Pride in the nation -“India First”
- A commitment to preserve, protect and perpetuate Indian culture, traditions and values. This includes
 - Respect for teachers and other elders
 - Understanding and empathy for the challenged students

The honour code is entirely administered by the student body. The faculty and the administration co-operate with the honour committee in ensuring compliance of the honour code. Every student of the society is made aware of the honour code and the responsibility of its maintenance imposed on them. Students found guilty of an honour offence, without exception, are dismissed permanently from the institution where they are enrolled. A student accused of honour violation has a fair opportunity to present his viewpoint before any decision is taken. The honour code would certainly bring benefits both to the individual student and to the society.

ABOUT SCHOOL

SIES School of Pharmaceutical Sciences (SIES SPS), an integral part of this well-established community inaugurated on June 29, 2024, is in the list of educational hubs in Navi Mumbai imparting quality based technical education, offering four-year Bachelor of Pharmacy (B. Pharm) and two-year Diploma in Pharmacy (D. Pharm) program. SIES SPS B. Pharm program, is approved by Pharmacy Council of India, New Delhi and is affiliated to the University of Mumbai, Mumbai. SIES SPS D. Pharm program is approved by Pharmacy Council of India, New Delhi and Maharashtra State Board of Technical Education, Mumbai. The Institute has the reputation of being known for its discipline and integrity. The faculty is sincere and enthusiastic, with a blend of industry and academia experienced professionals dedicated to teaching. The college follows strict norms regarding attendance & punctuality. Adhering to disciplinary rules and regulations is mandatory.

ADVISORY COUNCIL

SR.	NAME	DESIGNATION
1.	PADMA VIBHUSHAN PROF. (DR.) MAN MOHAN SHARMA	Chairman
2.	SHRI. MEHUL M. SHAH Managing Director & CEO, Encube Ethicals Pvt. Ltd.	Vice-Chairman
3.	PROF. (DR.) PADMA V. DEVARAJAN Dean - Research & Innovation, ICT	Member
4.	SHRI. DAVINDER SINGH MARWAH Former VP and Head, Global Manufacturing, Sun Pharmaceuticals Ltd., and Director, Foundation for Pharma Academy for Global Excellence (PAGE)	Member
5.	SHRI. S. SRINIVASAN MD and CEO, Srikem Laboratories Pvt. Ltd.	Member
6.	DR. QAYUM MUKADAM Consultant, Pharmaceutical Startups	Member
7.	DR. KRISHNAPRIYA MOHANRAJ Principal-in-charge, Bombay College of Pharmacy	Member
8.	DR. CHITRA RAMANAN Professor & Chairperson, PGDM, Pharmaceutical Management, SIES School of Business Studies	Member
9.	Prof. (Dr.) SARITHA R. SHETTY Principal	Ex-Officio Member Secretary

RAGGING IS PROHIBITED

Ragging is a punishable offence. Strict disciplinary action will be taken against any student who commits this offence.



INFRASTRUCTURE

SIES School of Pharmaceutical Sciences boasts of a cutting-edge infrastructure that facilitates academic excellence, research, and innovation in Pharmaceutical Sciences.

LIBRARY

Library caters to the needs of pharmacy students and researchers, providing access to pharmaceutical sciences literature, compounding references, and pharmacy practice resources. It is highly sophisticated with state-of-the-art facilities and has around 1500 books and about 12 journals.





CLASSROOMS

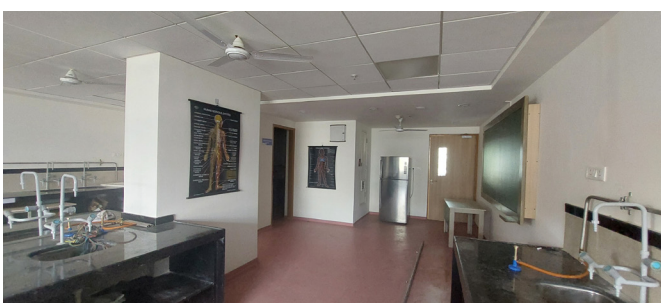
Spacious well-ventilated classrooms of adequate size having comfortable seating arrangement. and equipped with advanced audio - visual aids are available.

CENTRAL INSTRUMENT LABORATORY

The Central Instrument Laboratory (CIL) features air conditioning and is equipped with the latest modern analytical equipment and instruments. These include HPLC, Spectrophotometer, Digital Colorimeter, Brookfield Viscometer, Turbidity meter, Digital pH meter, Electronic Balance and various other tools designed to support research activities within the college.



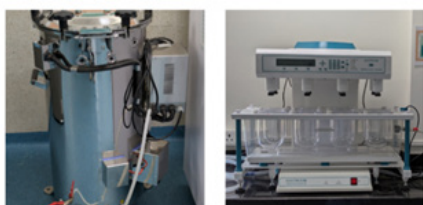
LABORATORIES



Well-equipped laboratories for hands on training in Pharmaceutics, Pharmaceutical Chemistry, Pharmacology, and Pharmacognosy. SIES SPS offers facilities for a wide range of experiments in Microbiology/ Biotechnology, and Pharmaceutical Analysis. The laboratories are thought fully designed and equipped with the essential infrastructure, including sophisticated equipment and instruments. Labs are spacious enough to ensure a safe and comfortable working environment for students.

HERBAL GARDEN

The herbal garden at our college is a collection of plants nestled within the campus, designed to provide students and faculty with a unique blend of educational and experiential opportunities. This garden serves as a living laboratory, showcasing a diverse array of herbs known for their culinary, medicinal, and aromatic properties.



MACHINE ROOM

Machine room serves as a formulation development laboratory that utilizes cutting-edge technology and helps students gain insights into dosage form design. It is equipped with state-of-the-art pharmaceutical machinery, including: Tablet Compression Machine, Tablet Coating Pan, 8 stage dissolution test apparatus Homogenizer, Ball Mill, Incubation Orbital Shaker, Diffusion Cell Apparatus Water Bath Shaker and Centrifuge, Magnetic stirrers and Hot Air Oven.

AMPHITHEATRE

It features tiered seating that allows all attendees a clear view of the front, promoting engagement and interaction. It serves as an ultimate venue for fostering collaborative learning and discussions among students and educators.



COURSES OFFERED

Program	Duration	Approved intake	Fees per year (₹)
D. Pharm	2 years	60	1,00,000/-
B. Pharm	4 years (8 semesters)	100	1,75,000/-

ELIGIBILITY

DIPLOMA IN PHARMACY (AS PER DIRECTORATE OF TECHNICAL EDUCATION NORMS)

For centralized admission:

The candidate should have passed 10+2 examination or its equivalent examination with physics, chemistry as compulsory subjects and either mathematics or biology.

For admission under institute level:

Eligibility is the same as above. Admission will be strictly as per the merit list of candidates.



BACHELOR OF PHARMACY (AS PER STATE COMMON ENTRANCE CELL, MUMBAI)

For centralized admission:

The candidate should have passed 10+2 examination or its equivalent examination with physics, chemistry as compulsory subjects and either mathematics or biology. The candidate should have appeared in all the subjects and should obtain non-zero score in MHT-CET 2024 conducted by the competent authority.

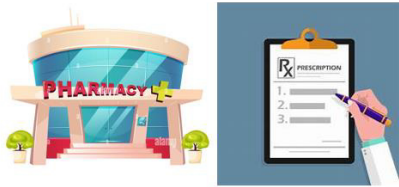
For admission under institute level:

Eligibility is the same as above. Admission will be strictly as per the merit list of candidates.

WHY CHOOSE SIES SCHOOL OF PHARMACEUTICAL SCIENCES ?

1. **Expert Advisory Council**
Highly qualified advisors from reputed pharmaceutical industries and academia.
2. **Qualified and Experienced Faculty**
The school has highly qualified and experienced faculty members who are technically competent in their respective subject areas. The school also supports continuing education for faculty to keep themselves updated with the latest developments in their field.
3. **State of the Art Infrastructure**
ICT enabled classrooms, well equipped laboratories, digitalized library, and amphitheatre.
4. **Industrial and International linkages**
Student will get opportunity to work and interact with industrial and international mentors to groom them in scientific or technical writing ability, case study-based learning etc.
5. **Training, Career Guidance and Placements**
The school not only believes in imparting pharmaceutical knowledge and skills to budding graduates but also aims to provide good placement assistance to the graduating students. The school will establish a placement cell to ensure the smooth placement of the graduating students.
6. **Holistic Development**
The school believes in the holistic development of every student and encourages students to take part in co-curricular activities such as essay competitions, quizzes, debates, etc., and extracurricular activities such as sports and other cultural activities.
7. **Strong Student Teacher Interactive System**
The school strongly advocates mentoring each student throughout his or her academic journey at the school. Faculty members are always available to motivate students to learn and ensure their smooth transition from a student to a competent pharmacy graduate.
8. **Book Bank Facility**
The school will offer a book bank facility for students to issue the textbooks essential for learning different courses during their B. Pharm or D. Pharm program.
9. **Hostel Facility**
Hostel facility will be provided to needful students.
10. **Guest lectures**
The school conducts guest lectures on an array of allied topics that may not be included in the regular pharmacy curriculum. These sessions help the students to get a wider perspective and enhance their domain knowledge on certain topics
11. **Industrial Visits And Hospital Visits**
The school will arrange industrial visits for students to observe the industrial applications of various concepts learnt. Hospital visits will be arranged for D. Pharm. students to understand community pharmacy.
12. **Merit Scholarships**
Meritorious students will be conferred with endowments.
13. **Parking facility**
Parking facility will be provided to students on request. Two-wheeler parking facility will be provided to the students on request.

CAREER PROSPECTS



Hospital Pharmacist



Pharmaceutical Sales Representative



Drug Store Entrepreneur



Pharmacovigilance Officer



Production Executive



Research Scientist



Quality Control Executive



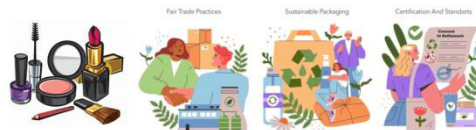
Medical Writer



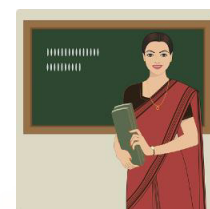
Drug Inspector



Nutraceutical Industry Executive



Cosmetic Industry Executive



Academician





SIES SHALL BE AMONGST THE MOST ADMIRABLE ACADEMIC INSTITUTIONS IN INDIA

WHAT DOES ADMIRATION MEAN?

A feeling of wonder, pleasure or approval.
 The act of looking on or contemplating with pleasure
 Approval, esteem, regard, affection, veneration, honor, idolization, reverence - synonyms for admiration

OUR ADMIRATION SHALL FLOW FROM

The quality of our efforts in the field of education
 The quality – the reach, the expanse and sweep of our academic services
 Our respect for 'Law' at all times
 The creation of an SIES Family where a full family tree would have experienced SIES as students

WHAT DOES THAT CONVEY FOR SIES?

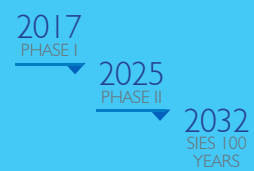
We shall confine ourselves to our core competence i.e. universalising education
 We shall redefine the boundaries of our activities beyond Mumbai, Navi Mumbai to India
 We need not be 'BIG' but shall endeavour to be the 'BEST'
 We shall be 'Admired' for our activities in life learning process through 'Education' The admiration shall come from all stakeholders – students, staff, society
 Our scale of admiration shall be based on the value addition we provide during the student days
 We shall ever remain 'Student centric' for we have no existence without them

IT'S HALF WAY THROUGH OUR CENTENARY IN 2032

Phase I - GOALS

Student strength to reach over 50,000
 SIES – University for Higher education
 All institutions accredited at the highest grade 'A' for e.g. in NAAC
 Socially responsive education. Beyond the classrooms or social media. 'ISR' the dominant face of SIES. A Good share of admiration from ISR.
 Most vibrant network of Alumni, Past Teachers and Staff, present human resources creating the vast SIES Family.

Phase II – Goals and action plan in 2022



THE IDENTITY FOR ANY SIES INSTITUTION

- A distinct logo within the SIES logo
- A value lab
- An ISR Department
- A Past Student's Association within the institution without separate legal existence
- An active forum for parents and teachers
- Capitation Free Merit based student enrollment at all levels
- Highest accreditation from a National Agency
- Research unit

